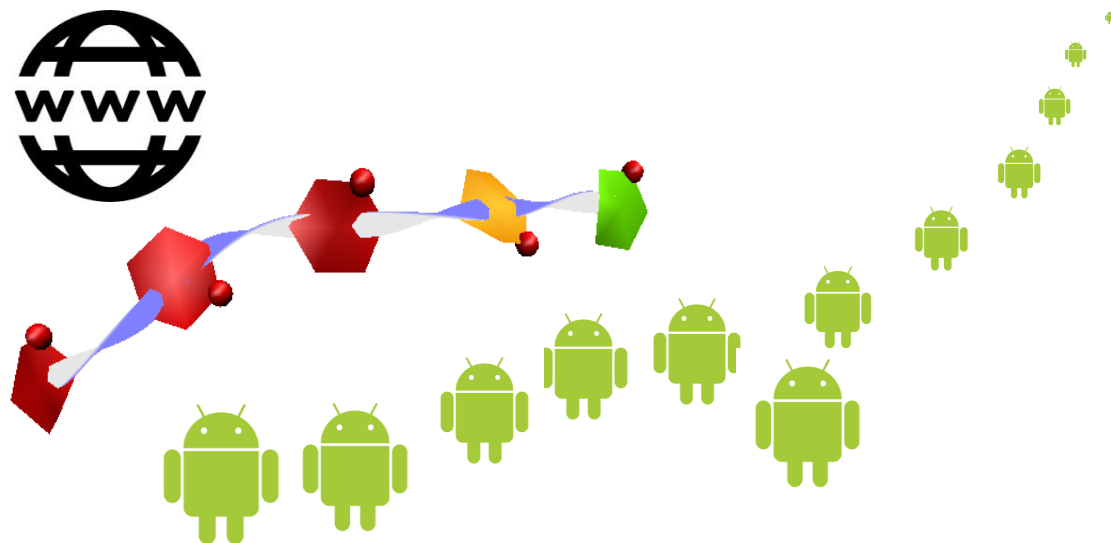


DESIGN AND DEVELOPMENT OF EFFECTIVE **WEB** AND **MOBILE** APPLICATIONS FOR VISUALIZING MOLECULAR STRUCTURE.



Michelle Kuttel

Department of Computer Science

University of Cape Town

<http://www.cs.uct.ac.za/~mkuttel>

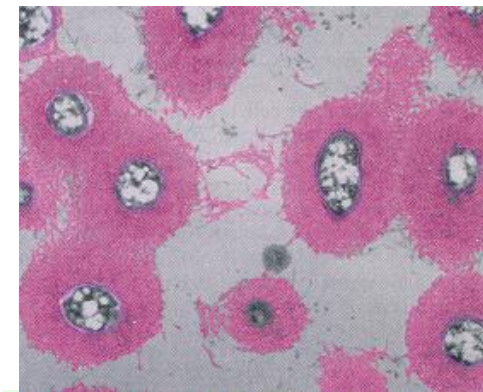
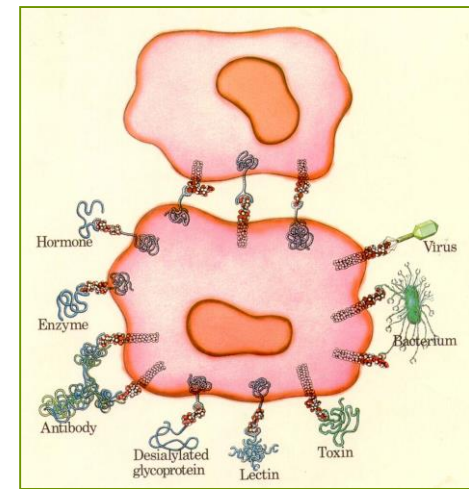
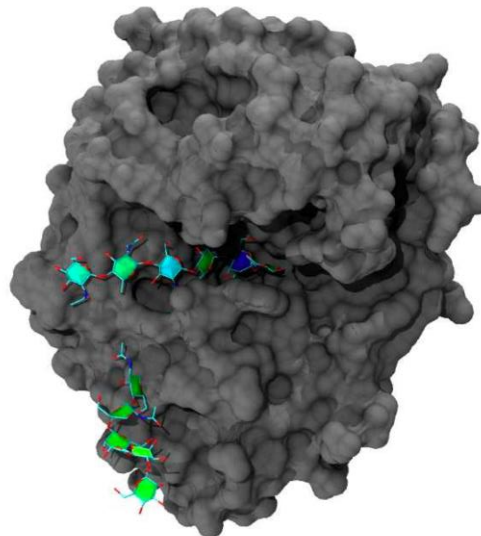
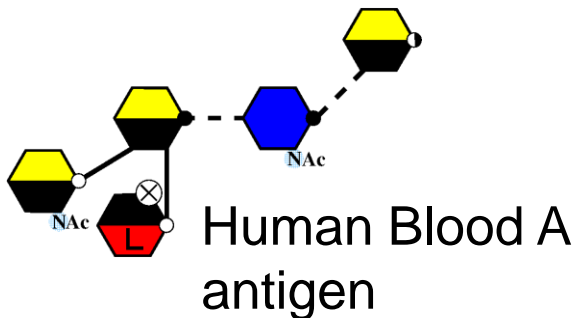


UNIVERSITY OF CAPE TOWN
DEPARTMENT OF COMPUTER SCIENCE



FOCUS: CARBOHYDRATES

- essential roles in cellular and molecular biology, in health and disease.
- e.g. modern bacterial vaccines target the **carbohydrate capsule**
- structure of great interest/importance for drug/vaccine/inhibitor design



Haemophilus influenzae bacteria expressing **polysaccharide capsules**.

CARBOHYDRATE MOLECULAR STRUCTURE REPRESENTATION (E.G. SHIGELLA FLEXINERI SEROTYPE Y O-ANTIGEN REPEATING UNIT)

1D: $\rightarrow 2) \text{aLRha}(1 \rightarrow 2) \text{aLRha}(1 \rightarrow 3) \text{aLRha}(1 \rightarrow 3) \text{bDGlcNAc}(1 \rightarrow$

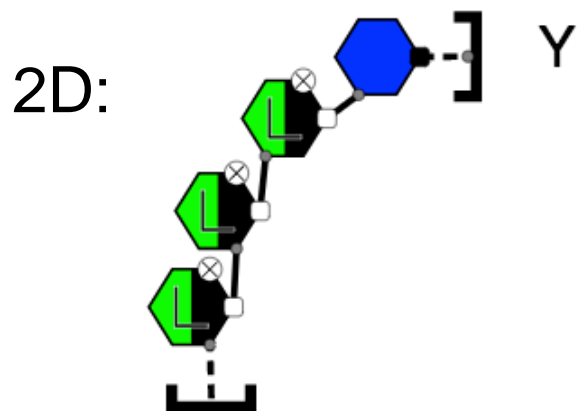
casper notation



CARBOHYDRATE MOLECULAR STRUCTURE REPRESENTATION

(E.G. SHIGELLA FLEXINERI SEROTYPE Y O-ANTIGEN REPEATING UNIT)

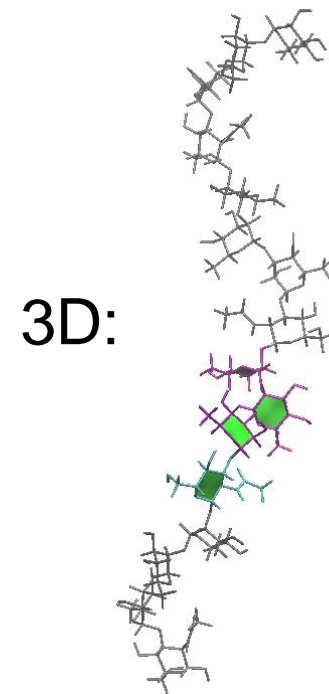
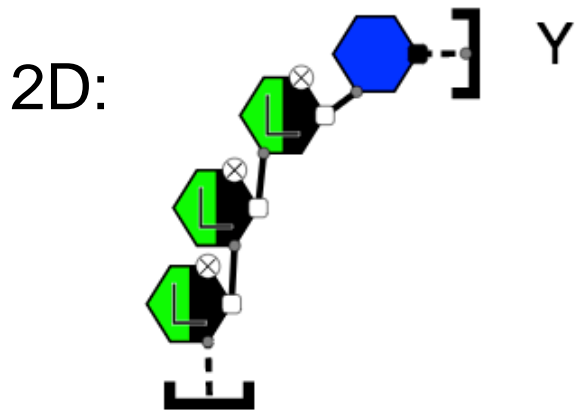
1D: $\rightarrow 2) \text{aLRha}(1 \rightarrow 2) \text{aLRha}(1 \rightarrow 3) \text{aLRha}(1 \rightarrow 3) \text{bDGlcNAc}(1 \rightarrow$



CARBOHYDRATE MOLECULAR STRUCTURE REPRESENTATION

(E.G. SHIGELLA FLEXINERI SEROTYPE Y O-ANTIGEN REPEATING UNIT)

1D: $\rightarrow 2) \text{aLRha}(1 \rightarrow 2) \text{aLRha}(1 \rightarrow 3) \text{aLRha}(1 \rightarrow 3) \text{bDGlcNAc}(1 \rightarrow$



AIMS

- Design and develop (optimal) software tools to assist with:
 - researchers' investigation and exploration of carbohydrate structure
 - researcher discussions with collaborators or funders
 - chemistry education



SOFTWARE DEVELOPMENT APPROACH

- User-Centered design principles
- Iterative, explorative
- Design is important, but often neglected in development of **scientific software**.



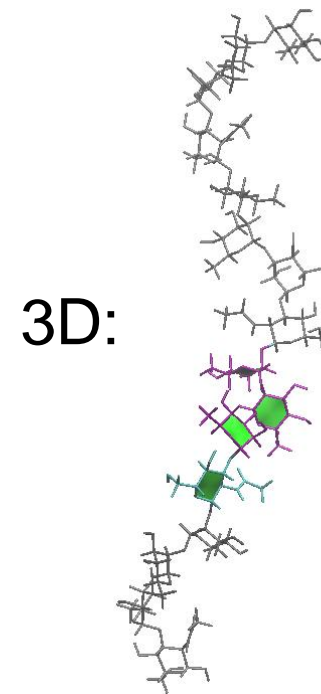
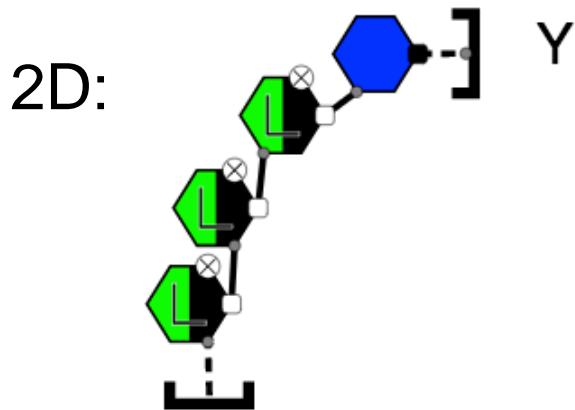
There is never a single optimal solution to a design problem, but rather a huge variety of alternative clear and effective designs.



CARBOHYDRATE MOLECULAR STRUCTURE REPRESENTATION

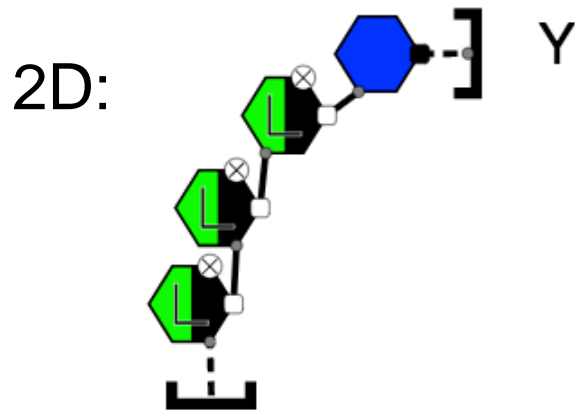
(E.G. SHIGELLA FLEXINERI SEROTYPE Y O-ANTIGEN REPEATING UNIT)

1D: $\rightarrow 2) \text{aLRha}(1 \rightarrow 2) \text{aLRha}(1 \rightarrow 3) \text{aLRha}(1 \rightarrow 3) \text{bDGlcNAc}(1 \rightarrow$



SOFTWARE FOR MOLECULAR STRUCTURE REPRESENTATION

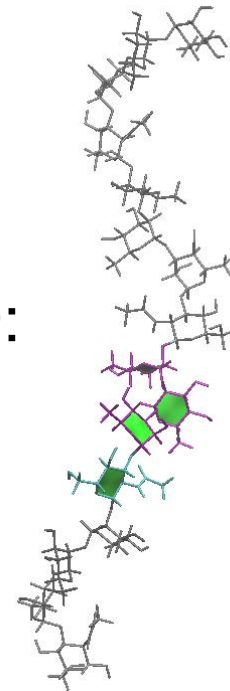
1D: ->2)aLRha(1->2)aLRha(1->3)aLRha(1->3)bDGlcNAc(1->



CarbBuilder

3D:

version 2
C#
improved building
algorithm



SOFTWARE FOR MOLECULAR STRUCTURE REPRESENTATION

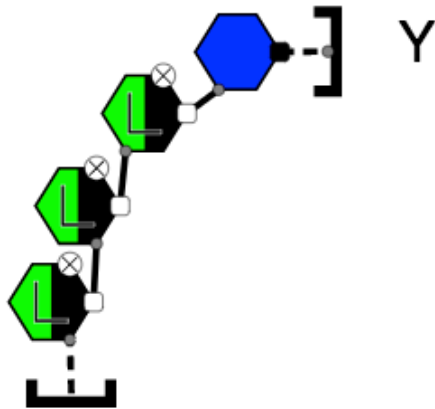
1D: $\rightarrow 2)\alpha\text{LRha}(1\rightarrow 2)\alpha\text{LRha}(1\rightarrow 3)\alpha\text{LRha}(1\rightarrow 3)\beta\text{DGlcNAc}(1\rightarrow$



Glycano



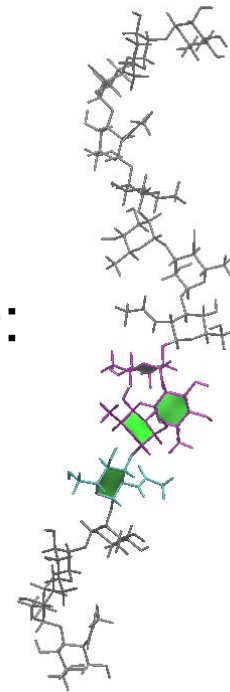
2D:



CarbBuilder



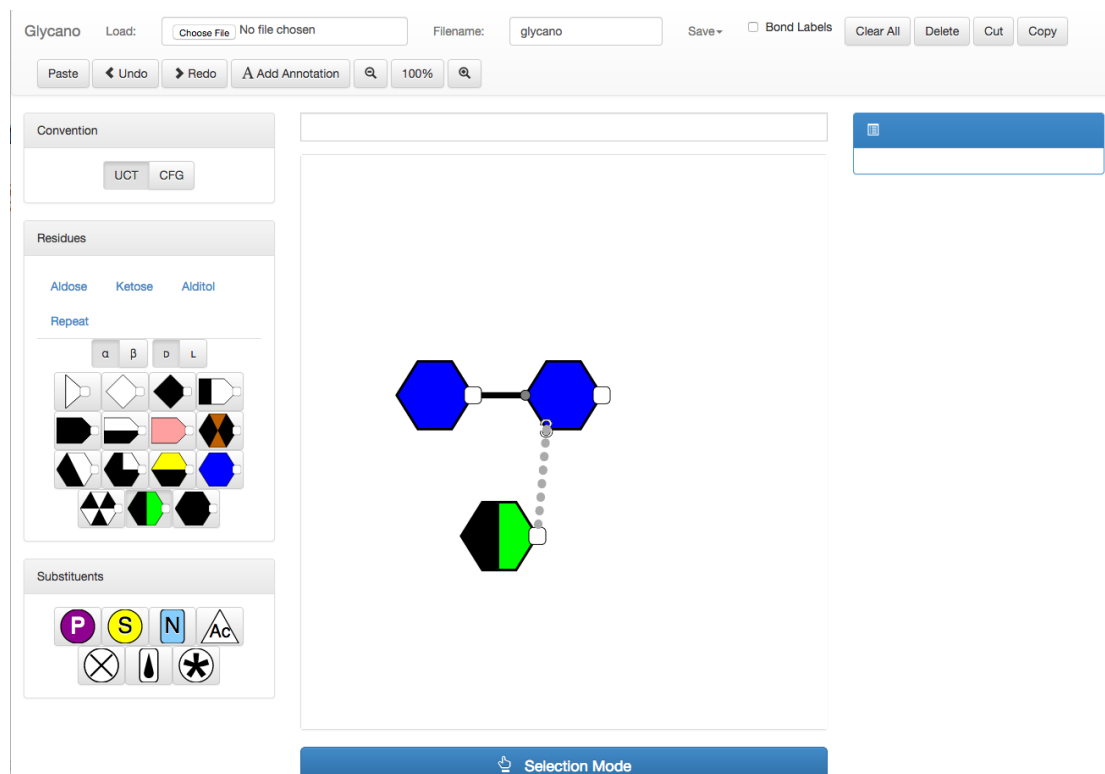
3D:



- Original Java version now Javascript web application <http://people.cs.uct.ac.za/~jwatson/>

- Aims:

- ease of access
 - no software to install
- ease of use
 - minimize mouse clicks
- testing new symbols for monosaccharides



SOFTWARE FOR MOLECULAR STRUCTURE REPRESENTATION

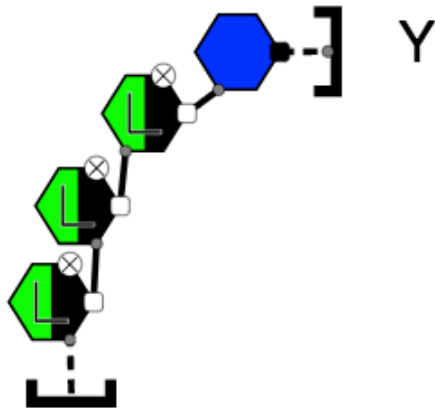
1D: $\rightarrow 2)\alpha\text{LRha}(1\rightarrow 2)\alpha\text{LRha}(1\rightarrow 3)\alpha\text{LRha}(1\rightarrow 3)\beta\text{DGlcNAc}(1\rightarrow$



Glycano



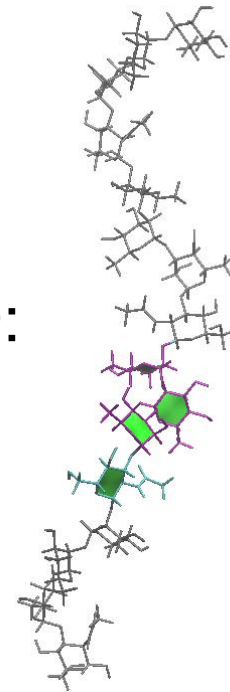
2D:



CarbBuilder

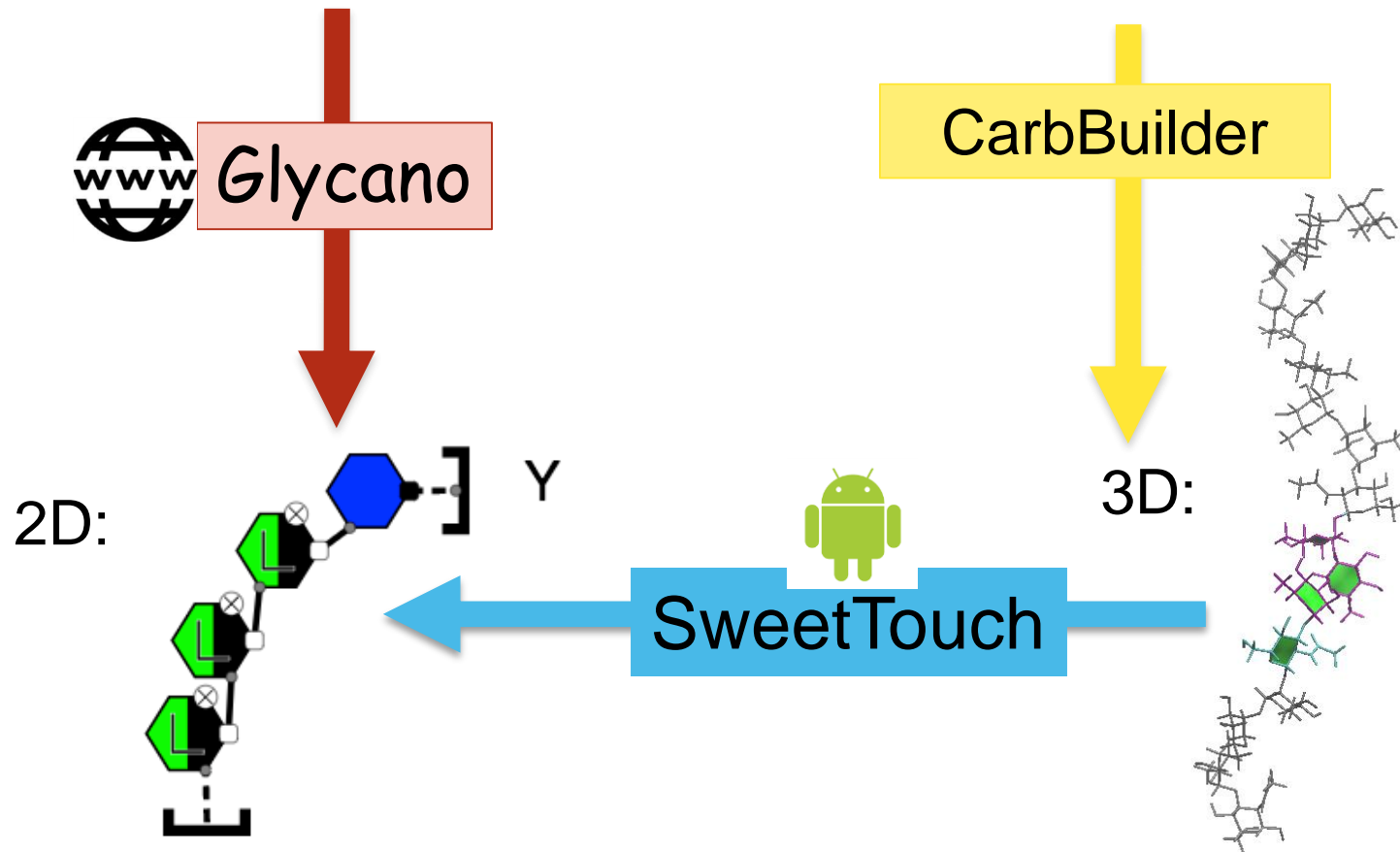


3D:



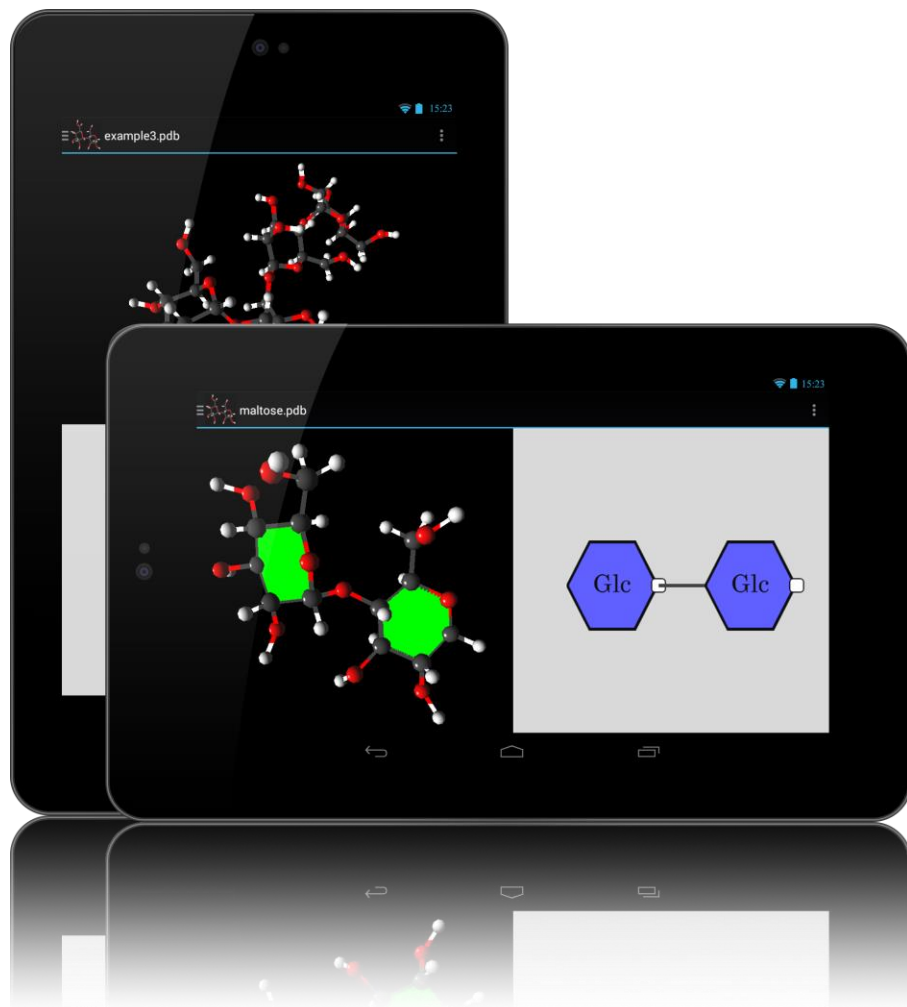
SOFTWARE FOR MOLECULAR STRUCTURE REPRESENTATION

1D: $\rightarrow 2) \alpha \text{LRha}(1 \rightarrow 2) \alpha \text{LRha}(1 \rightarrow 3) \alpha \text{LRha}(1 \rightarrow 3) \beta \text{DGlcNAc}(1 \rightarrow$





SweetTouch

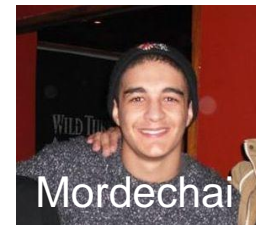


An Open Source Android application for the 3D visualisation of molecules and the **identification** of carbohydrate rings.

4th year (Honours) project by:



Wesley
Robinson



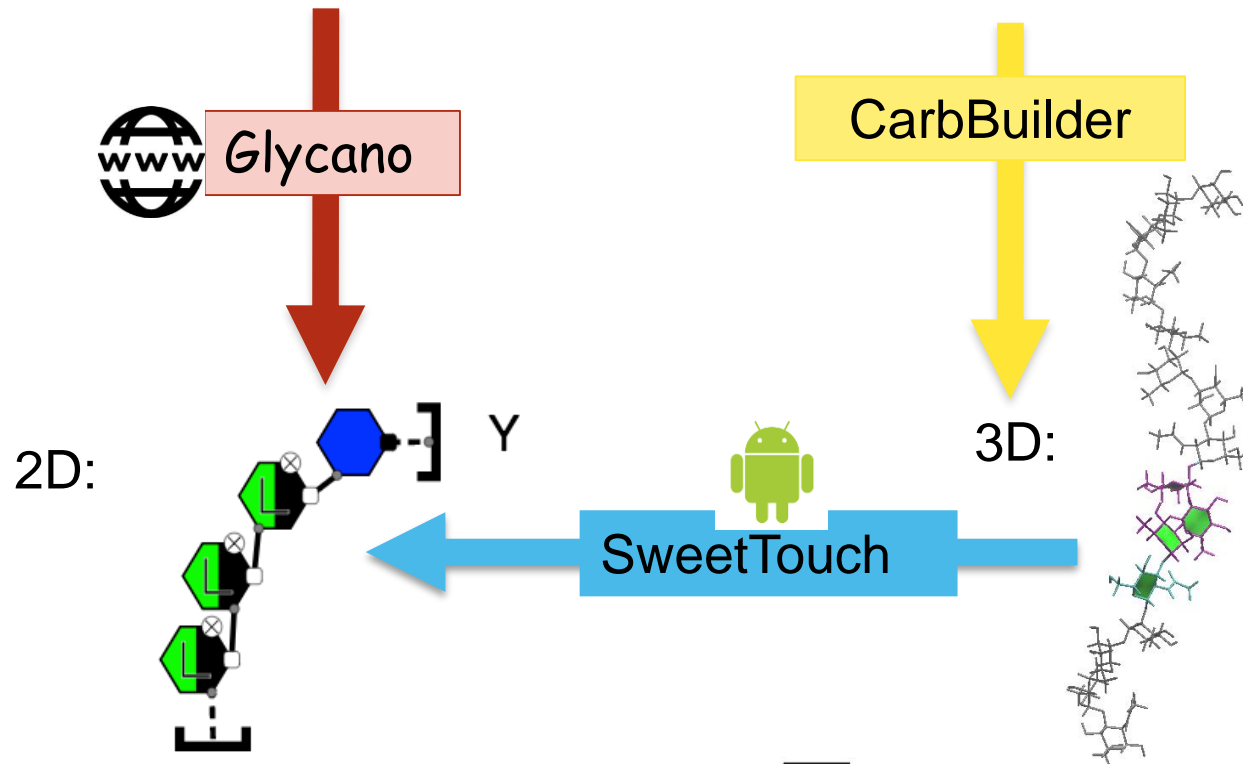
Mordechai
Serraf



CONCLUSIONS

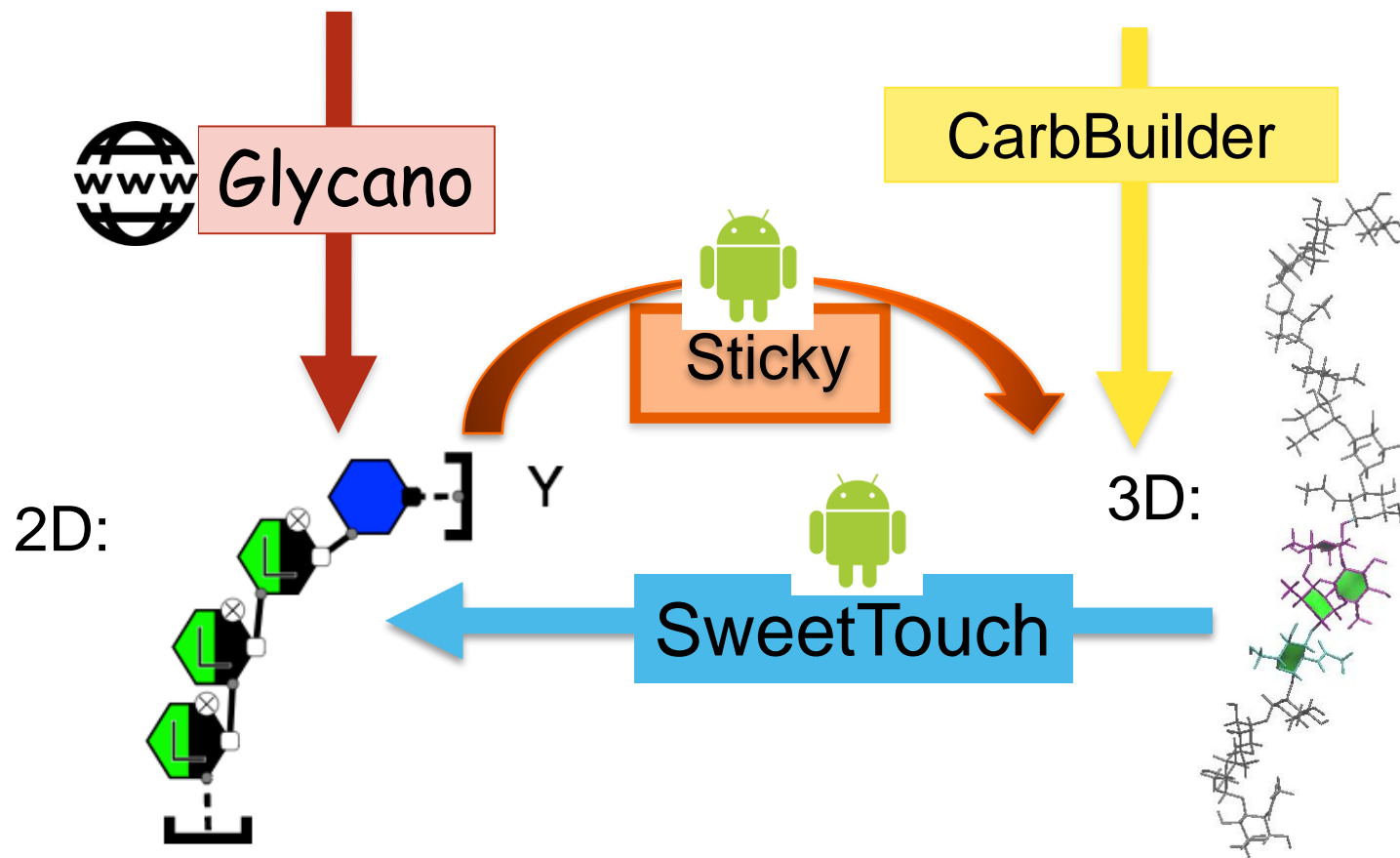
- Developing and refining a suite of software tools to help researchers investigate and explore carbohydrate structure

1D: $\rightarrow 2) \text{aLRha}(1 \rightarrow 2) \text{aLRha}(1 \rightarrow 3) \text{aLRha}(1 \rightarrow 3) \text{bDGlcNAc}(1 \rightarrow$



FUTURE WORK

1D: $\rightarrow 2) \alpha \text{LRha}(1 \rightarrow 2) \alpha \text{LRha}(1 \rightarrow 3) \alpha \text{LRha}(1 \rightarrow 3) \beta \text{DGlcNAc}(1 \rightarrow$



ACKNOWLEDGEMENTS

University of Cape Town



James Watson

Mordechai Serraf

Wesley Robinson

Neil Ravenscroft

Stockholm University



Göran Widmalm

Financial Support

South African Medical Research Council

QUESTIONS?

